

BLACK CAT CAPERS

by Andrea Tacheria



24114-99 | Black Cat Panel | Black Multi



24115-99 | Border Stripe | Black Multi



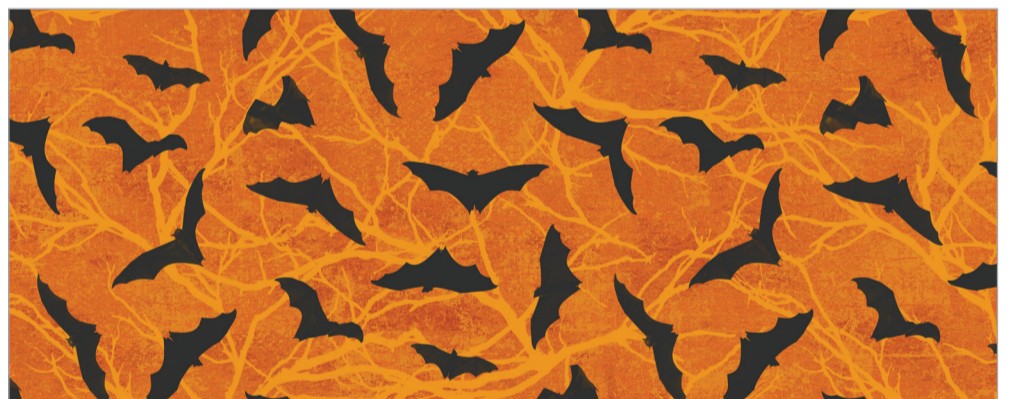
24116-99 | Packed Pumpkins | Black Multi



24117-99 | Tossed Pumpkins | Black Multi



24121-12 | Bats | Beige Black



24121-55 | Bats | Orange Black



DP24126-99 | Apron and Oven Mitt Panel | Black Multi



Apron Assembly Instructions

1. Lay out the apron pieces on a flat surface. Press the front panel pieces and the oven mitt pieces together along the outer edges.
2. Lay the front panel pieces and the oven mitt pieces together along the outer edges.
3. Lay the front panel pieces and the oven mitt pieces together along the outer edges.
4. Lay the front panel pieces and the oven mitt pieces together along the outer edges.
5. Lay the front panel pieces and the oven mitt pieces together along the outer edges.
6. Lay the front panel pieces and the oven mitt pieces together along the outer edges.
7. Lay the front panel pieces and the oven mitt pieces together along the outer edges.
8. Lay the front panel pieces and the oven mitt pieces together along the outer edges.
9. Lay the front panel pieces and the oven mitt pieces together along the outer edges.
10. Lay the front panel pieces and the oven mitt pieces together along the outer edges.

Oven Mitt Assembly

1. Lay out the oven mitt pieces on a flat surface. Press the front panel pieces and the oven mitt pieces together along the outer edges.
2. Lay the front panel pieces and the oven mitt pieces together along the outer edges.
3. Lay the front panel pieces and the oven mitt pieces together along the outer edges.
4. Lay the front panel pieces and the oven mitt pieces together along the outer edges.
5. Lay the front panel pieces and the oven mitt pieces together along the outer edges.
6. Lay the front panel pieces and the oven mitt pieces together along the outer edges.
7. Lay the front panel pieces and the oven mitt pieces together along the outer edges.
8. Lay the front panel pieces and the oven mitt pieces together along the outer edges.
9. Lay the front panel pieces and the oven mitt pieces together along the outer edges.
10. Lay the front panel pieces and the oven mitt pieces together along the outer edges.

Back Right

Front Left

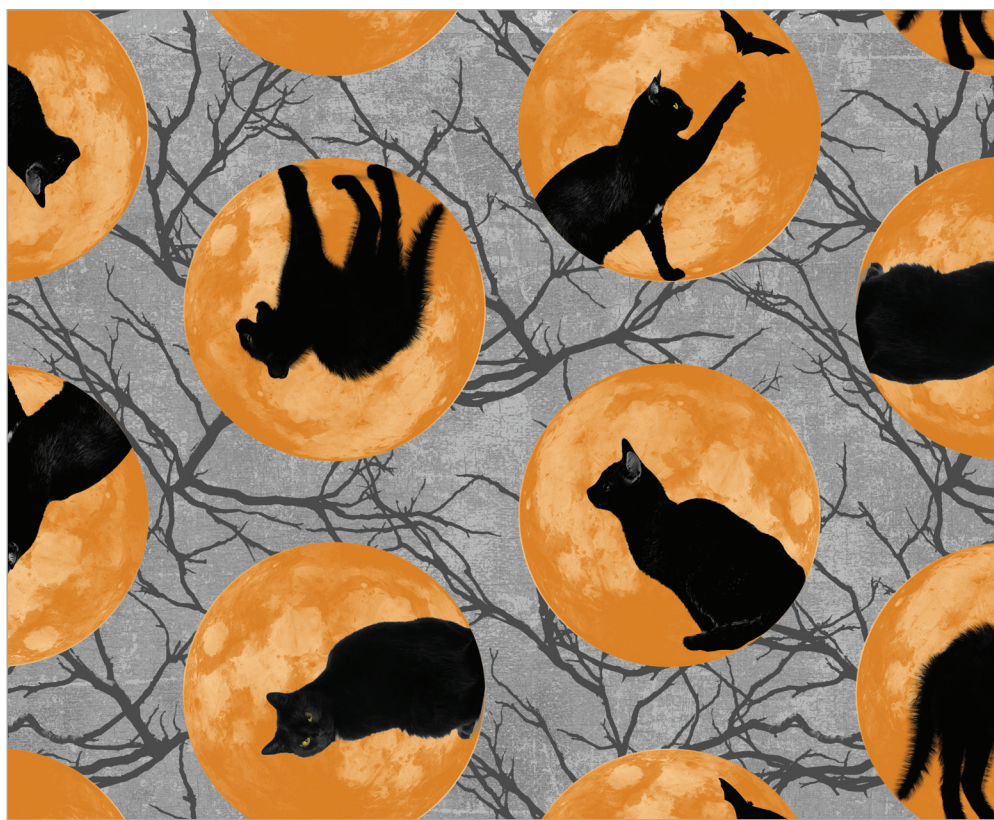
B.

BLACK CAT CAPERS

by Andrea Tacheria



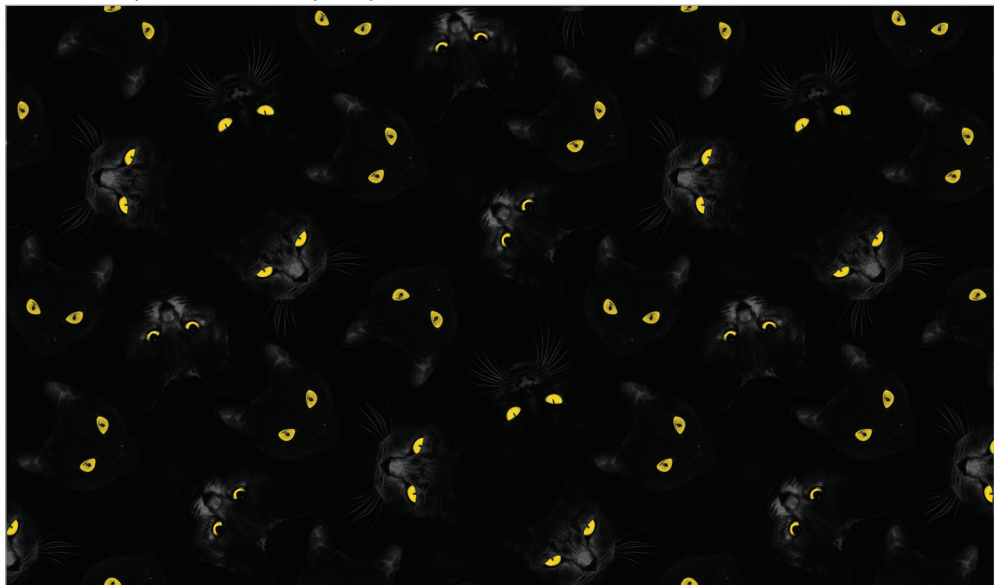
DP24127-99 | Placemats | Black Multi



24118-95 | Cats in Moon | Gray Multi



24119-98 | Cats Chasing Moon | Dark Gray Multi



24120-99 | Cat's Eyes | Black Multi



24122-12 | Harlequin | Beige Black



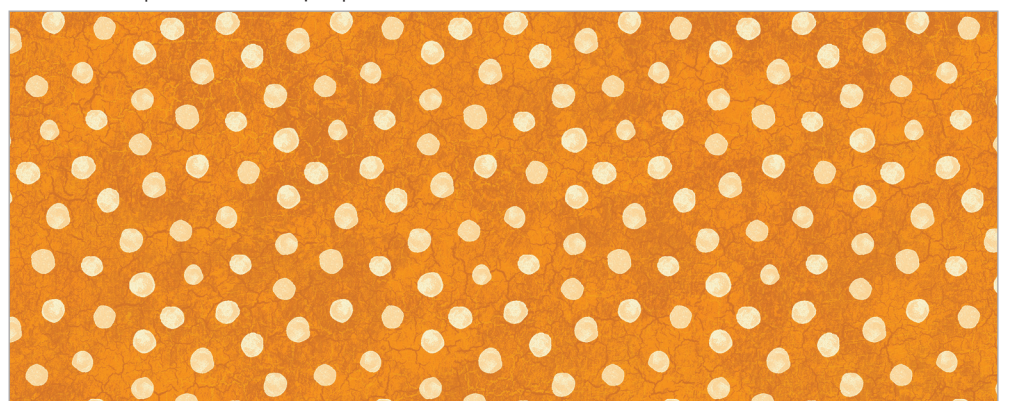
24124-99 | Damask | Black Gray



24123-99 | Barcode Stripe | Black Multi



24125-99 | Dots | Black Orange



24125-55 | Dots | Orange Beige